

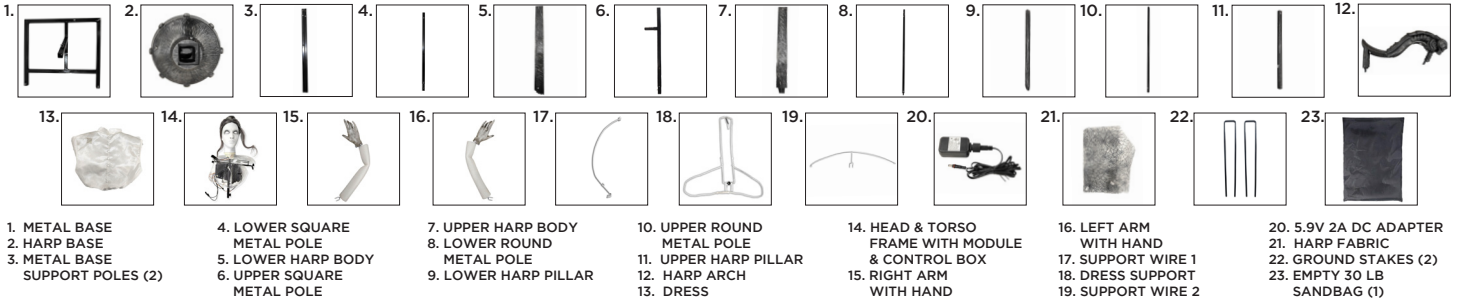
CELESTE THE RESTLESS GHOST HARP ANIMATRONIC™

INSTALLATION AND OPERATING INSTRUCTIONS

KEEP ALL PLASTIC AND WIRE PARTS AWAY FROM CHILDREN.

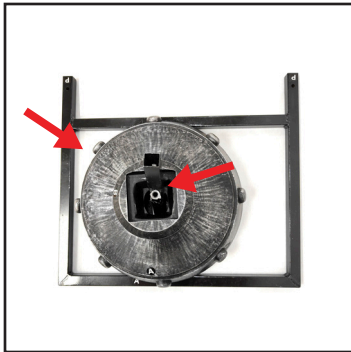
WARNING: DO NOT TURN ON THE PROP UNTIL FULLY ASSEMBLED. STAY CLEAR OF THE PROP WHILE OPERATING.
ESTIMATED ASSEMBLY TIME: 7 MINUTES.

PARTS

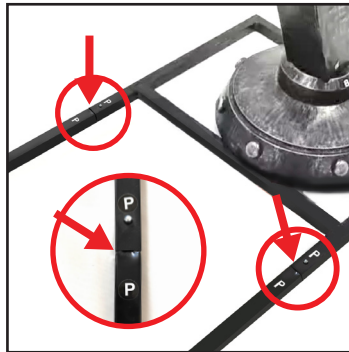


- | | | | | | | |
|---------------------------------|----------------------------|-------------------------------|----------------------------|--|------------------------|-----------------------------|
| 1. METAL BASE | 4. LOWER SQUARE METAL POLE | 7. UPPER HARP BODY METAL POLE | 10. UPPER ROUND METAL POLE | 14. HEAD & TORSO FRAME WITH MODULE & CONTROL BOX | 16. LEFT ARM WITH HAND | 20. 5.9V 2A DC ADAPTER |
| 2. HARP BASE | 5. LOWER HARP BODY | 8. LOWER ROUND METAL POLE | 11. UPPER HARP PILLAR | 15. RIGHT ARM WITH HAND | 17. SUPPORT WIRE 1 | 21. HARP FABRIC |
| 3. METAL BASE SUPPORT POLES (2) | 6. UPPER SQUARE METAL POLE | 9. LOWER HARP PILLAR | 12. HARP ARCH | 18. DRESS SUPPORT | 19. SUPPORT WIRE 2 | 22. GROUND STAKES (2) |
| | | | 13. DRESS | | | 23. EMPTY 30 LB SANDBAG (1) |

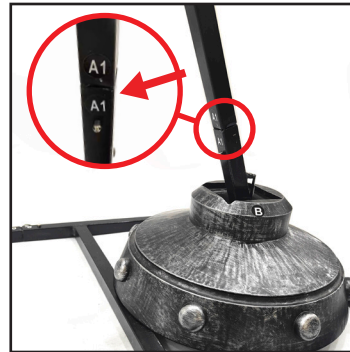
ASSEMBLY



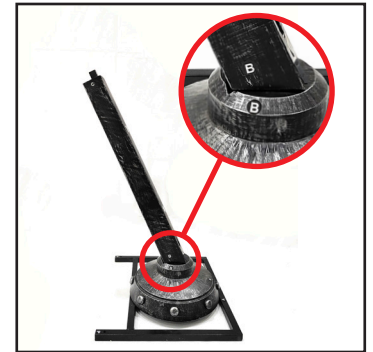
1. Slide the HARP BASE onto the METAL BASE. Align the front label on the HARP BASE to the front label on the METAL BASE.



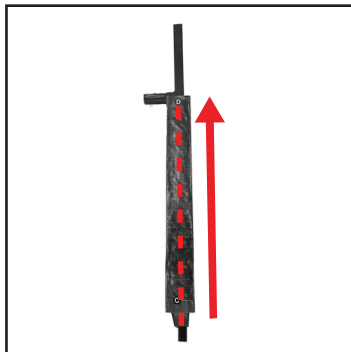
2. Snap lock the METAL BASE SUPPORT POLES to the METAL BASE.
(MATCH P TO P - x2)



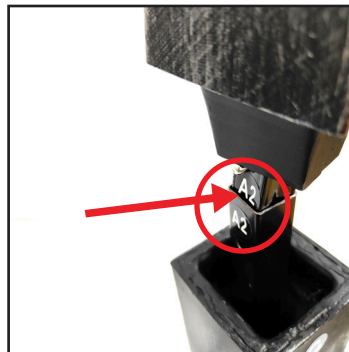
3. Snap lock the LOWER SQUARE METAL POLE onto the METAL BASE.
(MATCH A1 TO A1)



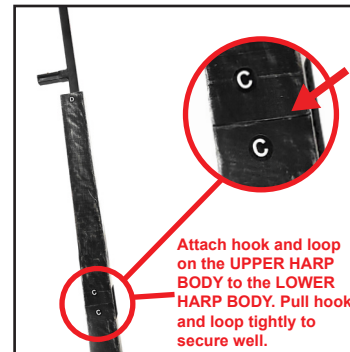
4. Slide the LOWER HARP BODY over the LOWER SQUARE METAL POLE to connect to the HARP BASE.
(MATCH B TO B)



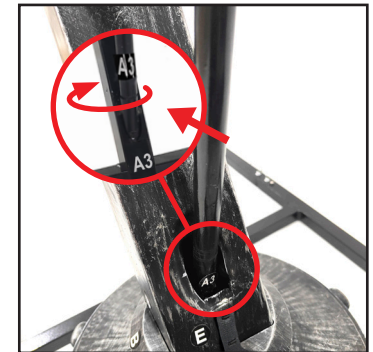
5. Slide the UPPER SQUARE METAL POLE into the UPPER HARP BODY.



6. Snap lock the assembled UPPER SQUARE METAL POLE and UPPER HARP BODY into the LOWER HARP BODY.
(MATCH A2 TO A2)

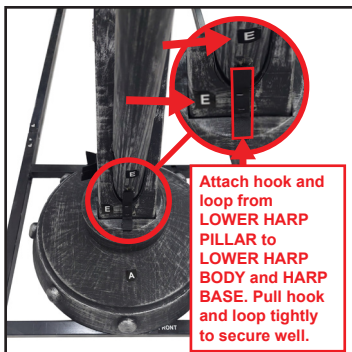


7. Slide down the UPPER HARP BODY to connect it to the LOWER HARP BODY.
(MATCH C TO C)



8. Screw the LOWER ROUND METAL POLE clockwise into the METAL BASE.
(MATCH A3 TO A3)

ASSEMBLY



Attach hook and loop from LOWER HARP PILLAR to LOWER HARP BODY and HARP BASE. Pull hook and loop tightly to secure well.

9. Slide the LOWER HARP PILLAR over the LOWER ROUND METAL POLE and into the LOWER HARP BODY.

(MATCH E TO E)



10. Screw the UPPER ROUND METAL POLE clockwise into the LOWER ROUND METAL POLE.

(MATCH A4 TO A4)



Attach hook and loop on the UPPER HARP PILLAR to the LOWER HARP PILLAR. Pull hook and loop tightly to secure well.

11. Connect the UPPER HARP PILLAR to the LOWER HARP PILLAR.

(MATCH F TO F)



Attach hook and loop on the HARP ARCH to the UPPER HARP PILLAR and the UPPER HARP BODY. Pull hook and loop tightly to secure well.

12. Attach the HARP ARCH to the UPPER HARP PILLAR and the UPPER HARP BODY.

(MATCH D TO D)
(MATCH G TO G)



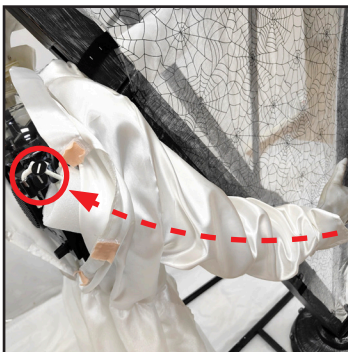
WARNING: Do NOT remove the hair net around the bun.

13. Slide the DRESS over the HEAD & TORSO FRAME WITH MODULE & CONTROL BOX. Make sure metal bar from frame comes out of hole in DRESS shoulder.

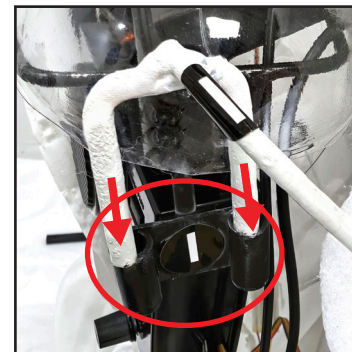


NOTE: Pull wires labeled 5.9V 2A DC ADAPTER and DEMO out of dress hole.

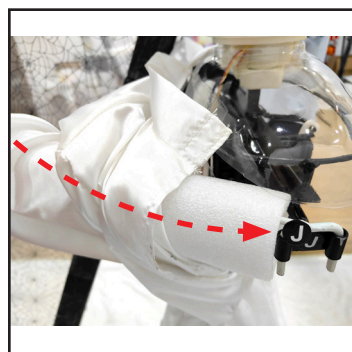
14. Snap lock the HEAD & TORSO FRAME WITH MODULE & CONTROL BOX frame to the UPPER SQUARE METAL POLE. (MATCH H TO H)



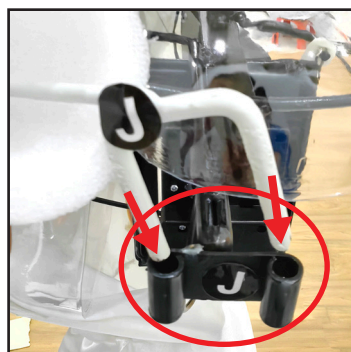
15. Insert the RIGHT ARM WITH HAND up the right sleeve from the wrist opening.



16. Insert the two metal posts on the RIGHT ARM WITH HAND into the HEAD & TORSO FRAME WITH MODULE & CONTROL BOX. (MATCH I TO I)



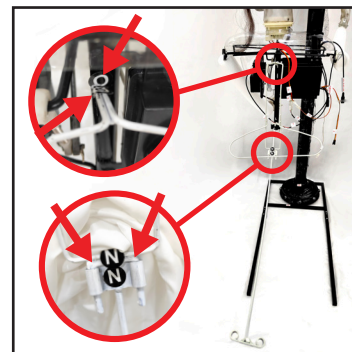
17. Insert the LEFT ARM WITH HAND up the left sleeve from the wrist opening.



18. Insert the two metal posts on the LEFT ARM WITH HAND into the HEAD & TORSO FRAME WITH MODULE & CONTROL BOX. (MATCH J TO J)

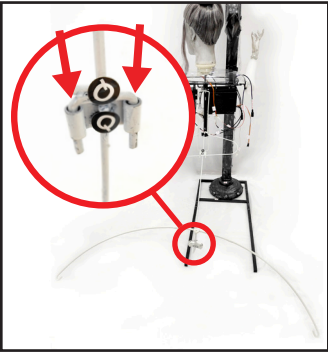


19. Insert the two metal posts of the SUPPORT WIRE 1 into the frame of the HEAD & TORSO FRAME WITH MODULE & CONTROL BOX. (MATCH L TO L)



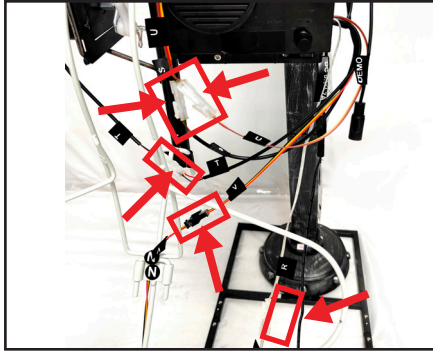
20. Insert the three metal posts of the DRESS SUPPORT into the TORSO FRAME and SUPPORT WIRE 1. (MATCH N TO N)
(MATCH O TO O)

ASSEMBLY

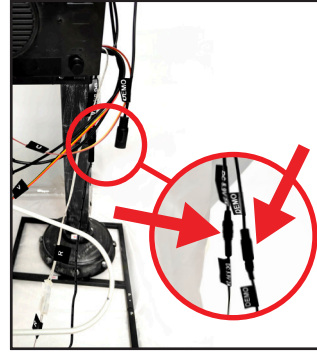


21. Insert the two metal posts of the SUPPORT WIRE 2 into SUPPORT WIRE 1 with the curve facing away from the body.

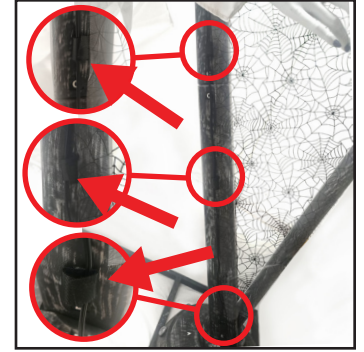
(MATCH Q TO Q)



22. Connect wires to CONTROL BOX:
(MATCH R TO R - Body LED)
(MATCH V TO V - Human Sensor)
Ensure the following wires are properly pre-connected:
(S TO S - Eye LEDs)
(T TO T - Arm Movement)
(U TO U - Head Movement)



23. Plug the 5.9V 2A DC ADAPTER (included) into the wire labeled DC 5.9V 2A from the CONTROL BOX and secure it by twisting it firmly. Do not overtighten.



24. Attach 5.9V 2A DC ADAPTER and DEMO wires along the UPPER HARP BODY and LOWER HARP BODY using the wire management hook and loop clips.

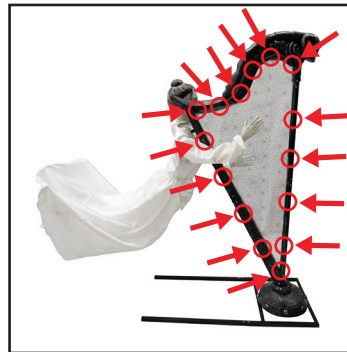


25. Hook and loop the back of the DRESS closed.

Hook and loop the bottom of the DRESS to the SUPPORT WIRE 2.

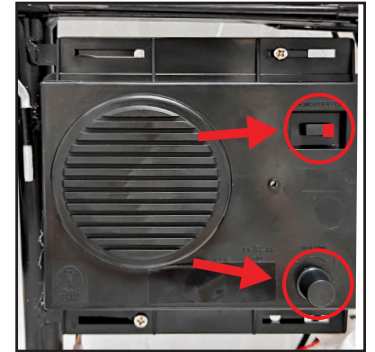


26. Hook and loop the inside front of the DRESS to the chest blister.



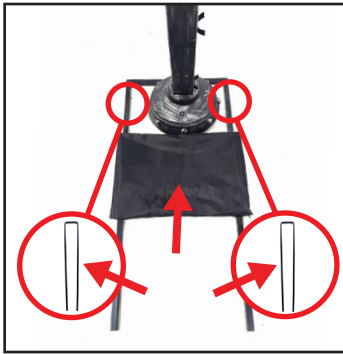
27. Hook and loop the HARP FABRIC onto the harp frame.

Secure the wires from the 5.9V 2A DC ADAPTER and optional demo function to the HARP BASE.



28. Turn the switch to the ON position to activate the item. Move in front of the item or make a loud sound (clap) to activate. Turn item OFF when not in use. Adjust volume control as needed.

ASSEMBLY



29. Slide STAKES over METAL BASE SUPPORT POLES and into ground as needed.

Fill 30 LB SANDBAG and place on METAL BASE SUPPORT POLES and METAL BASE.

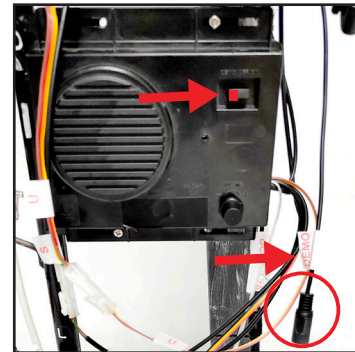
OPERATING INSTRUCTIONS

OPTIONAL DEMO SETUP

FOOTPAD IS NOT INCLUDED. MUST BE PURCHASED SEPARATELY.

1. Insert the cable from optional footpad into the cable labeled DEMO from the CONTROL BOX.
2. Place the switch on the CONTROL BOX into the DEMO position to enable footpad activation.
3. Step on footpad to activate the scary sequence!

Footpads are sold separately and can be purchased at www.tekkyaccessories.com



**Warning! This item is not a toy. For decoration only. Small parts, choking hazard.
This product is intended for use by persons 15 years of age and older.
Not intended for use by children ages 14 years and younger.**

WARNING
DO NOT TURN ITEM ON UNTIL YOU HAVE COMPLETELY FINISHED ASSEMBLY.
STAY CLEAR OF ITEM WHILE OPERATING.
DO NOT PLACE ITEM ON UNEVEN GROUND.
DO NOT PLACE WEIGHT ON ITEM WHILE IN OPERATION.



DO NOT RETURN THIS ITEM TO THE STORE!
If experiencing technical difficulties, please go to www.tekkydesign.com for assistance.



TEKKY™

visit us at tekkydesign.com

Requires 5.9V 2A DC adapter (included).

ALL NEW MATERIALS:
PLASTIC, POLYESTER, METAL, FOAM.

Surface washable only.

CELESTE THE RESTLESS GHOST HARP
ANIMATRONIC™

is a trademark of Tekky.
Copyright © 2025 Tekky
All Rights Reserved.
MADE IN CHINA

SMART PHONE SCAN
SETUP VIDEO



